



1620M

Protector

Mobility Case

Sensitive equipment needs protection, and since 1976 the answer has been the Pelican™ Protector Case. These cases are designed rugged, and travel the harshest environments on earth. Against the extreme cold of the arctic or the heat of battle, Pelican cases have survived.

Made in the USA, these tough cases are designed with an automatic purge valve, that equalizes air pressure, a watertight silicone O-ring lid, over-molded rubber handles and stainless steel hardware.

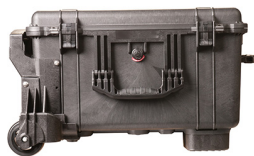
- Personalized nameplate service available
- **4" diameter x 1.5" wide (10.2 x 3.8cm) heavy duty polyurethane wheels with stainless steel bearings**
- **Water resistant, crushproof, and dust resistant**
- Automatic pressure equalization valve - balances interior pressure, keeps water out
- Easy open double-throw latches
- Fold down handles
- O-ring seal
- Open cell core with solid wall design - strong, light weight
- Retractable extension trolley handle
- Stainless steel hardware and padlock protectors
- Ultra-tough HPX® Polymer Construction



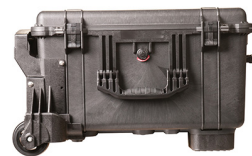
CONFIGURATIONS



1620M
Standard



1620MNF
No Foam



1620WF
With Foam

DIMENSIONS

Interior (LxWxD)	21.48 x 16.42" x 12.54 (54.6 x 41.7 x 31.9 cm)
Exterior (LxWxD)	26.20 x 23.00" x 15.61 (66.5 x 58.4 x 39.6 cm)
Lid Depth	2.01" (5.1 cm)
Bottom Depth	10.53" (26.7 cm)
Total Depth	12.54" (31.9 cm)
Int Volume	2.56 ft ³ (0.072 m ³)
Padlock Hole Diameter	5/16" (12.7 cm)

MATERIALS

Body	Polypropylene
Latch	ABS
O-Ring	Polymer
Pins	Stainless Steel
Foam	1.3 lb Polyurethane
Purge Body	ABS
Purge Vent	3 Micron Hydrophobic Non-Woven

COLOURS

■ Black

WEIGHT

Weight With Foam	31.42 lbs (14.3 kg)
Weight Empty	28.00 lbs (12.7 kg)

TEMPERATURE

Minimum Temperature	-40°F (-40 °C)
Maximum Temperature	190°F (87.8 °C)

CERTIFICATIONS

IP57

OTHER

Wheels	2
Extendable Handle	yes
Master Pack	1
Nameplate	yes
Military	yes

ACCESSORIES



1609
Lid Organizer



1621
6 pc. Replacement Foam Set



1622
Pick N Pluck™ Sections Only
(set of 4)



1623
Replacement O-ring



1625
Padded Divider Set



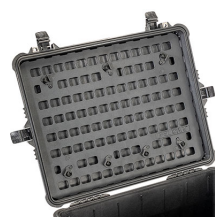
1507QM
Quick Mounts - set of 4



1506TSA
TSA Lock



1500D
Desiccant Silica Gel



1610MP
EZ-Click™ MOLLE Panel

Pelican
23215 Early Ave • Torrance, CA 90505 USA • Phone: (310) 326-4700 • (800) 473-5422 • Fax: (310) 326-3311
sales@pelican.com • www.pelican.com

Document created on 04-10-26