



iM2950

Storm

Travel Case

The Pelican™ Storm Case™ has the same legendary DNA as our Pelican Protector Case, with one primary difference: A unique Press and Pull latch that locks automatically, but open with a light touch.

Guaranteed for life, the Pelican Storm case is made in the USA and engineered using the finest components.

- Five Press & Pull Latches
- Guaranteed For Life
- Two Padlockable Hasps
- Two Double-layered, Soft-grip Handles
- Powerful Hinges
- O-ring seal



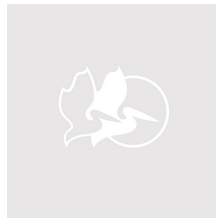
CONFIGURATIONS



iM2950
Standard



iM2950-X0000
No Foam



iM2950-X0002
With Padded Dividers



iM2950-X0006
With TrekPak Divider System



iM2950-X0001
With Foam

DIMENSIONS

Interior (LxWxD)	29.00 x 18.00" x 10.50 (73.7 x 45.7 x 26.7 cm)
Exterior (LxWxD)	31.30 x 20.40" x 12.20 (79.5 x 51.8 x 31 cm)
Lid Depth	2.00" (5.1 cm)
Bottom Depth	8.50" (21.6 cm)
Total Depth	10.5" (26.7 cm)
Int Volume	3.17 ft ³ (0.09 m ³)
Padlock Hole Diameter	0.28" (0.7 cm)

MATERIALS

Body	Injection Molded HPX™ high performance resin
Latch	Valox - Polybutylene Terephthalate (PBT)
Latch (Alt)	Xenoy - Polyester/Polycarbonate blend
O-Ring	EPDM
Pins	Stainless Steel
Pins (Alt)	Aluminum
Foam	1.3/1.35 polyester
Purge Body	Valox - Polybutylene Terephthalate (PBT)
Purge Body (Alt)	Xenoy - Polyester/Polycarbonate blend
Purge Vent	Gortex membrane

COLORS

■ Black

■ OD Green

■ Yellow

WEIGHT

Weight With Foam	28.70 lbs (13 kg)
Weight Empty	20.80 lbs (9.4 kg)
Buoyancy	200.85 lbs (91.1 kg)
Master Pack Weight	28.00 lbs (12.7 kg)

TEMPERATURE

Minimum Temperature	-20°F (-28.9 °C)
Maximum Temperature	140°F (60 °C)

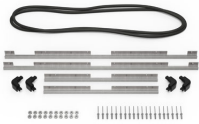
CERTIFICATIONS

IP67

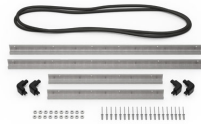
OTHER

Extendable Handle	yes
Master Pack	1
Military	yes

ACCESSORIES



iM2950-BEZEL-LID
Lid Bezel Kit



iM2950-BEZEL
Base Bezel Kit



iM2950-FOAM
6 pc. Replacement Foam Set



iM-LIDSTAY
Lid Stay



iM29XX-UTILITYORG
Utility Organizer



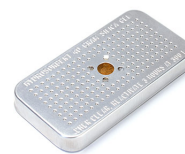
iM2950TPKIT
TrekPak Case Divider Kit



iM2950TPDIV
Extra TrekPak Dividers



1506TSA
TSA Lock



1500D
Desiccant Silica Gel

Pelican

23215 Early Ave • Torrance, CA 90505 USA • Phone: (310) 326-4700 • (800) 473-5422 • Fax: (310) 326-3311
sales@pelican.com • www.pelican.com

Document created on 04-11-26