



1556

Air

Pelican understands that finding the right protection, with the perfect fit for your gear, is a priority. Pelican™ Air began with long protection and quickly grew to offer you deep protection. The time has come to combine those two in order to create Pelican's new Long/Deep Series. Gone are the days of dangerously forcing your equipment into the wrong size case or leaving it unprotected with no other options. With Pelican's Long/Deep series, we've created the missing link so that no matter the demands of your gear, Pelican has you covered.

- Automatic pressure equalization valve - balances interior pressure, keeps water out
- Fold down over-molded handle
- Retractable extension trolley handle
- Stainless steel padlock protectors
- Business card holder
- Maximum airline carry-on size*
- Press and Pull™ Latches
- Limited Lifetime Warranty
- Super-light proprietary HPX²™ Polymer - up to 40% lighter
- Waterproof O-ring seal
- User-customizable Pick N Pluck™ foam
- Waterproof, crushproof, dustproof
- IP67 & MIL-SPEC certified
- Made in the USA



CONFIGURATIONS



DIMENSIONS

Interior (LxWxD)	21.63 x 10.76" x 8.97 (54.9 x 27.3 x 22.8 cm)
Exterior (LxWxD)	23.43 x 13.52" x 10.57 (59.5 x 34.3 x 26.8 cm)
Lid Depth	2.00" (5.1 cm)
Bottom Depth	6.97" (17.7 cm)
Total Depth	8.97" (22.8 cm)
Int Volume	1.21 ft ³ (0.034 m ³)
Padlock Hole Diameter	0.31" (0.8 cm)

MATERIALS

Body	Proprietary Polypropylene Blend
Latch	ABS
O-Ring	EPDM

Purge Body ABS
Purge Vent Hi-Flow Gore-Tex 3 Micron Hydrophobic Non-Woven

COLORS

■ Black

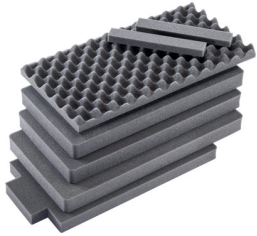
WEIGHT

Weight With Foam 11.20 lbs (5.1 kg)
Weight Empty 9.75 lbs (4.4 kg)
Buoyancy 84.95 lbs (38.5 kg)

TEMPERATURE

Minimum Temperature 0°F (-17.8 °C)
Maximum Temperature 140°F (60 °C)

ACCESSORIES



1556AirFS
7 pc. Replacement Foam Set



1506TSA
TSA Lock



AIRHANDL
EZ-Pull Multi-Stage Air Handle

Pelican

23215 Early Ave • Torrance, CA 90505 USA • Phone: (310) 326-4700 • (800) 473-5422 • Fax: (310) 326-3311
sales@pelican.com • www.pelican.com

Document created on 07-10-26