



iM2620

Storm

Travel Case

The Pelican™ Storm Case™ has the same legendary DNA as our Pelican Protector Case, with one primary difference: A unique Press and Pull latch that locks automatically, but open with a light touch.

Guaranteed for life, the Pelican Storm case is made in the USA and engineered using the finest components.

- Guaranteed for life
- **Watertight, crushproof, and dustproof**
- Trolley handle & wheel system
- Two Press & Pull Latches
- Two Padlockable Hasps
- Double-layered, Soft-grip Handle
- Vortex™ Valve
- Powerful Hinges
- Lightweight Strong HPX® Resin



DIMENSIONS

Interior (LxWxD)	20.00 x 14.00" x 10.00 (50.8 x 35.6 x 25.4 cm)
Exterior (LxWxD)	21.20 x 16.00" x 10.60 (53.8 x 40.6 x 26.9 cm)
Lid Depth	2.00" (5.1 cm)
Bottom Depth	8.00" (20.3 cm)
Total Depth	10" (25.4 cm)
Int Volume	1.62 ft ³ (0.046 m ³)
Padlock Hole Diameter	0.38" (1 cm)

MATERIALS

Body	Injection Molded HPX™ high performance resin
Latch	Valox - Polybutylene Terephthalate (PBT)
Latch (Alt)	Xenoy - Polyester/Polycarbonate blend
O-Ring	EPDM
Pins	Stainless Steel
Pins (Alt)	Aluminum
Foam	1.3/1.35 polyester
Purge Body	Valox - Polybutylene Terephthalate (PBT)
Purge Body (Alt)	Xenoy - Polyester/Polycarbonate blend
Purge Vent	Gortex membrane

COLORS

 Black	 OD Green
---	--

WEIGHT

Weight With Foam	14.50 lbs (6.6 kg)
Weight Empty	12.50 lbs (5.7 kg)
Buoyancy	101.62 lbs (46.1 kg)
Master Pack Weight	14.50 lbs (6.6 kg)

TEMPERATURE

Minimum Temperature -20°F (-28.9 °C)

Maximum Temperature 140°F (60 °C)

CERTIFICATIONS

IP67

OTHER

Master Pack	1
Military	yes

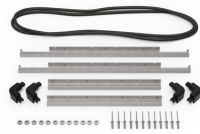
ACCESSORIES



iM26XX-PHOTOPALLET
Photography Pallet



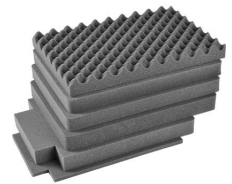
iM26XX-LIDORG
Lid Organizer



iM2620-BEZEL-LID
Lid Bezel Kit



iM2620-BEZEL
Base Bezel Kit



iM2620-FOAM
6 pc. Replacement Foam Set



iM-VALVE-M-B
Manual Purge Valve



PL2
Padlock (2 pack)



iM-STRAP-S-VER2
Padded Shoulder Strap



iM-LIDSTAY
Lid Stay



iM2620TPKIT
TrekPak Case Divider Kit



iM2620TPDIV
Extra TrekPak Dividers



1506TSA
TSA Lock



1500D
Desiccant Silica Gel



iM2620TPDIV
Extra TrekPak Dividers

Pelican

23215 Early Ave • Torrance, CA 90505 USA • Phone: (310) 326-4700 • (800) 473-5422 • Fax: (310) 326-3311
sales@pelican.com • www.pelican.com

Document created on 04-10-26