



1670 Protector

Sensitive equipment needs protection, and since 1976 the answer has been the Pelican™ Protector Case. These cases are designed rugged, and travel the harshest environments on earth. Against the extreme cold of the arctic or the heat of battle, Pelican cases have survived. Made in the USA, these tough cases are designed with an automatic purge valve, that equalizes air pressure, a watertight silicone O-ring lid, over-molded rubber handles and stainless steel hardware.

- Personalized nameplate service available
- **4 strong polyurethane wheels with stainless steel bearings**
- **Watertight, crushproof, and dustproof**
- 2 level Pick N Pluck™ with convoluted lid foam
- Automatic pressure equalization valve - balances interior pressure, keeps water out
- Easy open double-throw latches
- Lifetime Guarantee of Excellence
- O-ring seal
- Open cell core with solid wall design - strong, light weight
- Retractable extension trolley handle
- Stainless steel hardware and padlock protectors
- Two oversized fold down handles for extra grip
- Ultra-tough HPX® Polymer Construction



DIMENSIONS

Interior (LxWxD)	28.10 x 16.49" x 9.19 (71.4 x 41.9 x 23.3 cm)
Exterior (LxWxD)	31.04 x 19.39" x 11.17 (78.8 x 49.3 x 28.4 cm)
Lid Depth	1.80" (4.6 cm)
Bottom Depth	7.39" (18.8 cm)
Total Depth	9.19" (23.3 cm)
Int Volume	2.46 ft³ (0.07 m³)
Padlock Hole Diameter	0.31" (0.8 cm)

MATERIALS

Body	Polypropylene
Latch	ABS
O-Ring	Polymer
Pins	Stainless Steel
Foam	1.3 lb Polyurethane
Purge Body	ABS
Purge Vent	3 Micron Hydrophobic Non-Woven

COLORS

- Black

WEIGHT

Weight With Foam	26.00 lbs (11.8 kg)
Weight Empty	23.00 lbs (10.4 kg)
Buoyancy	182.00 lbs (82.6 kg)

Master Pack Weight 49.00 lbs (22.2 kg)

TEMPERATURE

Minimum Temperature -40°F (-40 °C)

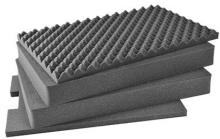
Maximum Temperature 190°F (87.8 °C)

OTHER

Wheels 4

Master Pack 1

ACCESSORIES



1671
4 pc. Replacement Foam Set



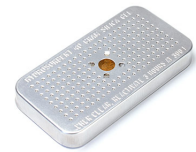
1675
Padded Divider Set



1507QM
Quick Mounts - set of 4



1506TSA
TSA Lock



1500D
Desiccant Silica Gel



PL2
Padlock (2 pack)

Pelican

23215 Early Ave • Torrance, CA 90505 USA • Phone: (310) 326-4700 • (800) 473-5422 • Fax: (310) 326-3311
sales@pelican.com • www.pelican.com

Document created on 04-10-26