



iM2300 Storm

The Pelican™ Storm Case™ has the same legendary DNA as our Pelican Protector Case, with one primary difference: A unique Press and Pull latch that locks automatically, but open with a light touch. Guaranteed for life, the Pelican Storm case is made in the USA and engineered using the finest components.

- Guaranteed for life
- **Watertight, crushproof, and dustproof**
- Two Press & Pull Latches
- Two Padlockable Hasps
- Double-layered, Soft-grip Handle
- Vortex™ Valve
- Powerful Hinges
- Lightweight Strong HPX® Resin



CONFIGURATIONS



iM2300
Standard



iM2300-X0000
No Foam



iM2300-X0002
With Padded Dividers



iM2300-X0001
With Foam

DIMENSIONS

Interior (LxWxD)	17.00 x 11.70" x 6.20 (43.2 x 29.7 x 15.7 cm)
Exterior (LxWxD)	18.20 x 13.90" x 6.70 (46.2 x 35.3 x 17 cm)
Lid Depth	2.00" (5.1 cm)
Bottom Depth	4.20" (10.7 cm)
Total Depth	6.2" (15.7 cm)
Int Volume	0.71 ft ³ (0.02 m ³)
Padlock Hole Diameter	0.28" (0.7 cm)

MATERIALS

Body	Injection Molded HPX™ high performance resin
Latch	Valox - Polybutylene Terephthalate (PBT)
Latch (Alt)	Xenoy - Polyester/Polycarbonate blend
O-Ring	EPDM
Pins	Stainless Steel
Pins (Alt)	Aluminum
Foam	1.3/1.35 polyester
Purge Body	Valox - Polybutylene Terephthalate (PBT)
Purge Body (Alt)	Xenoy - Polyester/Polycarbonate blend
Purge Vent	Gortex membrane

COLORS

■ Black

■ OD Green

■ Yellow

WEIGHT

Weight With Foam	7.10 lbs (3.2 kg)
Weight Empty	5.90 lbs (2.7 kg)
Buoyancy	45.64 lbs (20.7 kg)
Master Pack Weight	33.00 lbs (15 kg)

TEMPERATURE

Minimum Temperature	-20°F (-28.9 °C)
Maximum Temperature	140°F (60 °C)

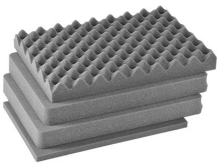
CERTIFICATIONS

IP67

OTHER

Master Pack	4
Military	yes

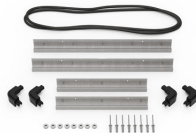
ACCESSORIES



iM2300-FOAM
4 pc. Replacement Foam Set



iM2300-BEZEL-LID
Lid Bezel Kit



iM2300-BEZEL
Base Bezel Kit



iM-STRAP-S-VER2
Padded Shoulder Strap



iM-LIDSTAY
Lid Stay



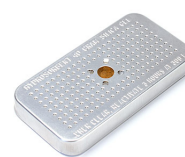
iM2300TPKIT
TrekPak Case Divider Kit



1525TPDIV
Extra TrekPak Dividers



1506TSA
TSA Lock



1500D
Desiccant Silica Gel



22-IM-VALVE
Storm Case Automatic Purge Valve

Pelican

23215 Early Ave • Torrance, CA 90505 USA • Phone: (310) 326-4700 • (800) 473-5422 • Fax: (310) 326-3311
sales@pelican.com • www.pelican.com

Document created on 05-23-26