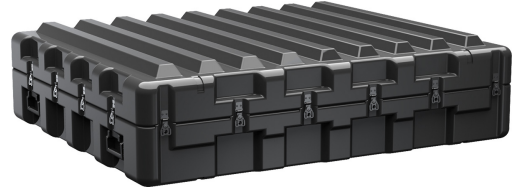




AL5545-0605AC

Trusted for over 40 years by the US Military, Single Lid Cases offer 20% more protective material in the edges and corners, where it is needed most, ensuring that valuable equipment is kept safe from any unforeseen elements. Available in several sizes, these cases are completely customizable with a wide range of bolt-on options like document holders, casters, humidity indicators and much more.

- Molded-in, tongue-in-groove gasketed parting lines for splash resistance and tight seals, even after impact
- Reinforced corners and edges for additional impact protection
- Molded-in ribs and corrugations for secure, non-slip stacking, columnar strength, and added protection
- Recessed hardware for extra protection
- Positive anti-shear locks, which prevent lid separation after impact, and reduce stress on hardware
- Patented molded-in metal inserts for catch and hinge attachment points, which provide strength and spread loads to the container
- One-piece construction, molded from lightweight, high-impact polyethylene



DIMENSIONS

Interior (LxWxD)	55.50 x 45.50" x 11.40 (141 x 115.6 x 29 cm)
Exterior (LxWxD)	58.50 x 48.50" x 15.00 (148.6 x 123.2 x 38.1 cm)
Lid Depth	5.12" (13 cm)
Bottom Depth	6.30" (16 cm)
Total Depth	11.42" (29 cm)
Int Volume	16.66 ft ³ (0.472 m ³)

MATERIALS

Body	RotoMolded Polyethylene
Latch	Steel (Nickel-black Plated)
O-Ring	Silicone Sponge
Foam	No Foam, empty case standard Optional PE and PU, 1 and 2 lb. options filled and lined
Purge Body	Aluminum
PRV Valve	.5 PSI Standard, Light Lift .25 PSI
Handle	Heavy Duty Injection Molded Standard
Optional Handles	Stainless Steel Passivate and Stainless Steel Black
Hardware	Yellow Carbon Steel Standard
Optional Hardware	Black Carbon Steel, Stainless Steel Passivate and Stainless Steel Black

COLORS

■ Gray - 133 Fed Std
26270

WEIGHT

Weight	73.80 lbs (33.5 kg)
Buoyancy	1435.65 lbs (651.2 kg)
Master Pack Weight	104.00 lbs (47.2 kg)

TEMPERATURE

Minimum Temperature -20°F (-28.9 °C)

Maximum Temperature 140°F (60 °C)

OTHER

Military yes

Pelican

23215 Early Ave • Torrance, CA 90505 USA • Phone: (310) 326-4700 • (800) 473-5422 • Fax: (310) 326-3311
sales@pelican.com • www.pelican.com

Document created on 07-10-26